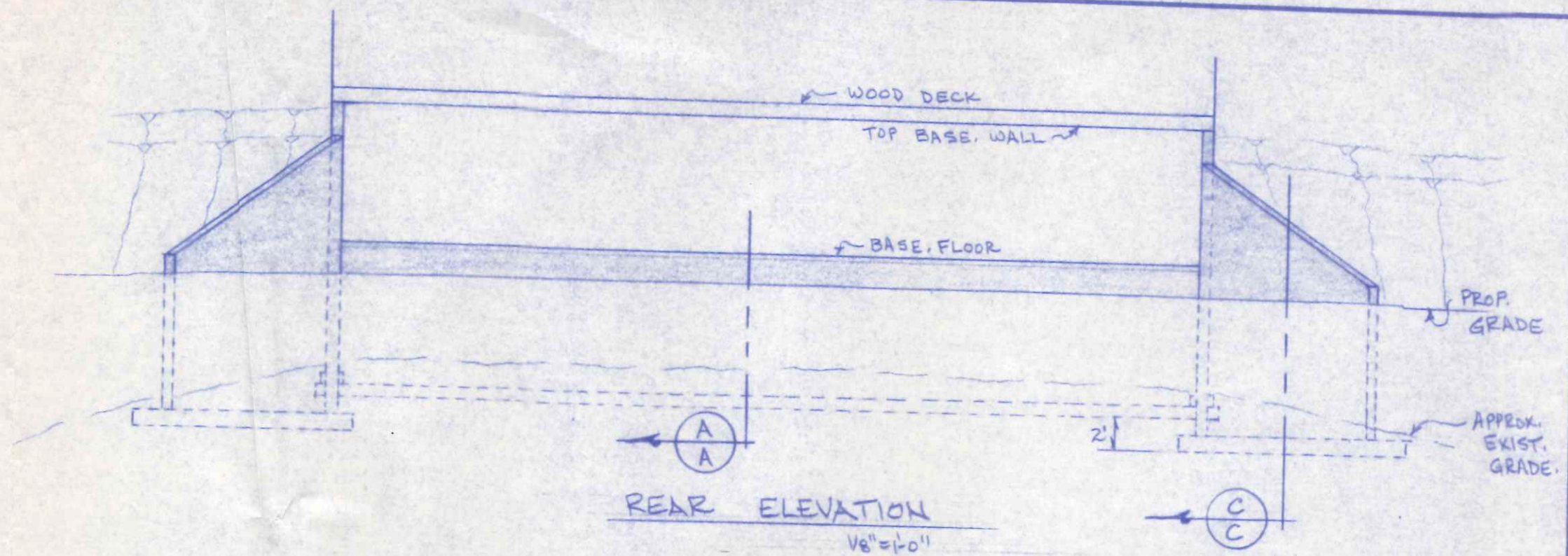
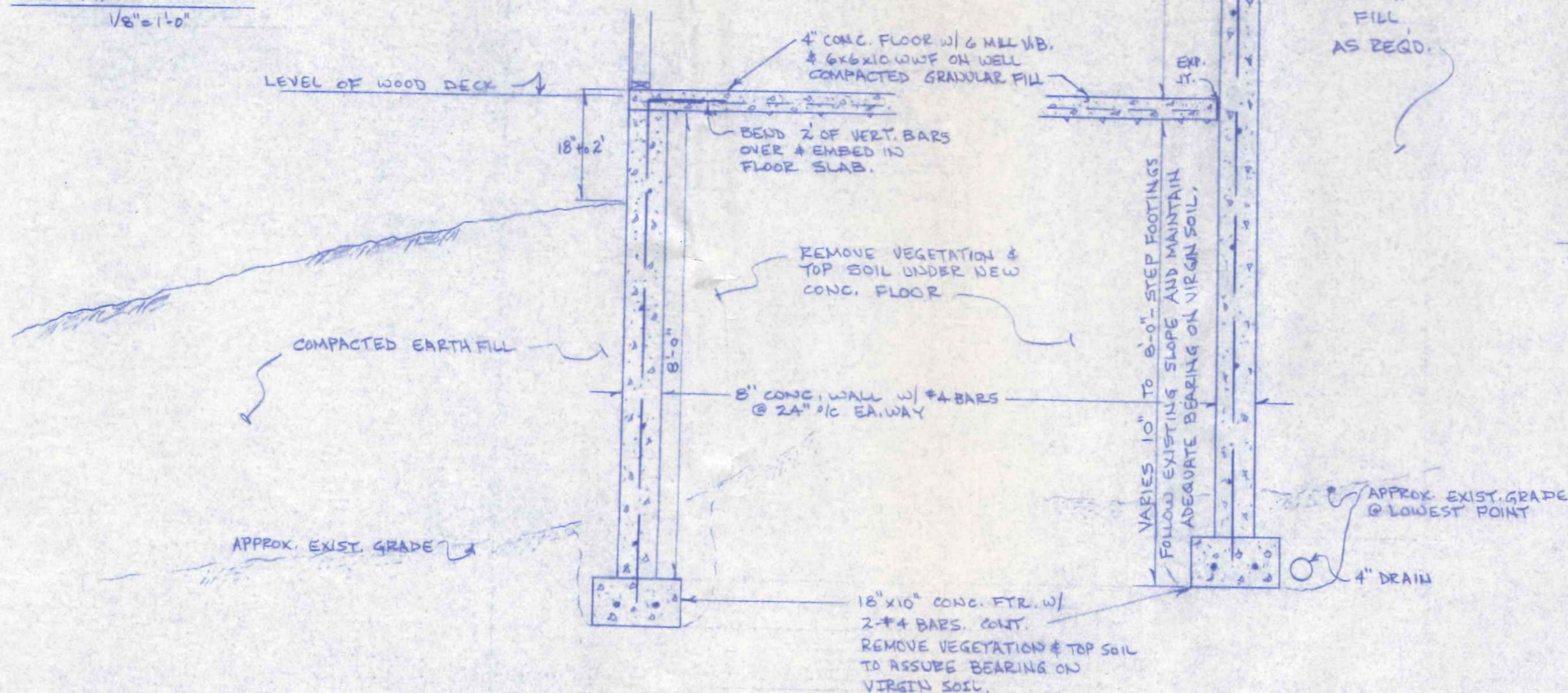


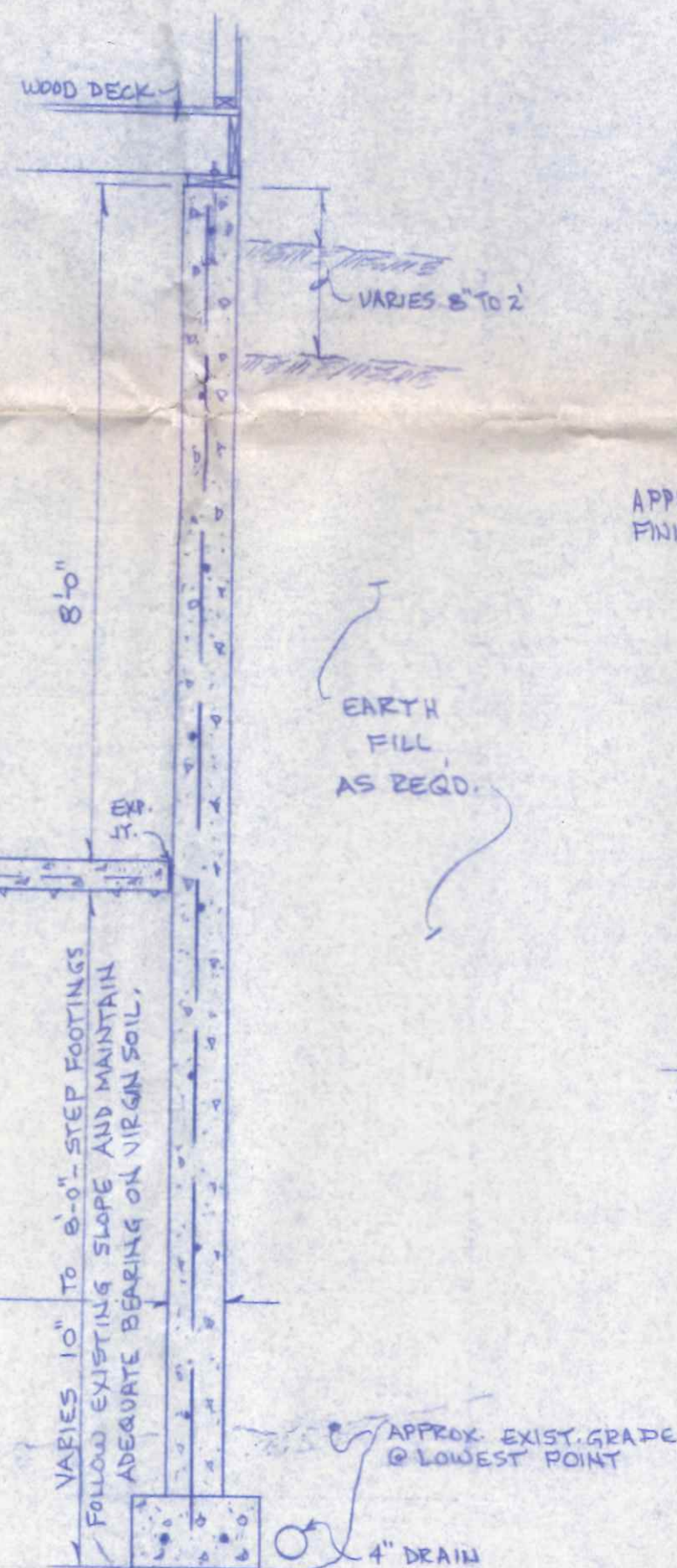
PLAN
1/8" = 1'-0"



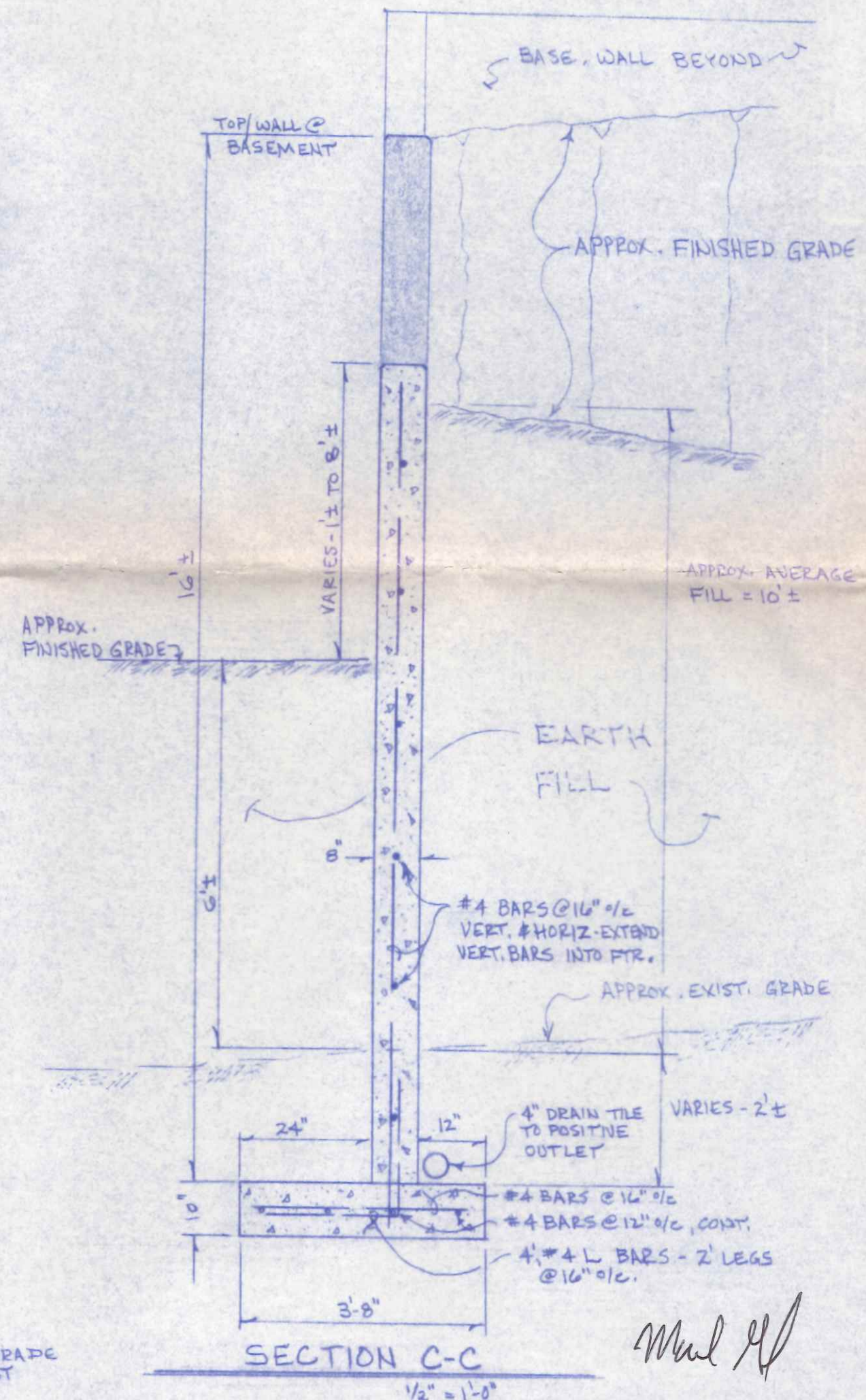
REAR ELEVATION
1/8" = 1'-0"



SECTION A-A
1/2" = 1'-0"



SECTION B-B
1/2" = 1'-0"



SECTION C-C
1/2" = 1'-0"

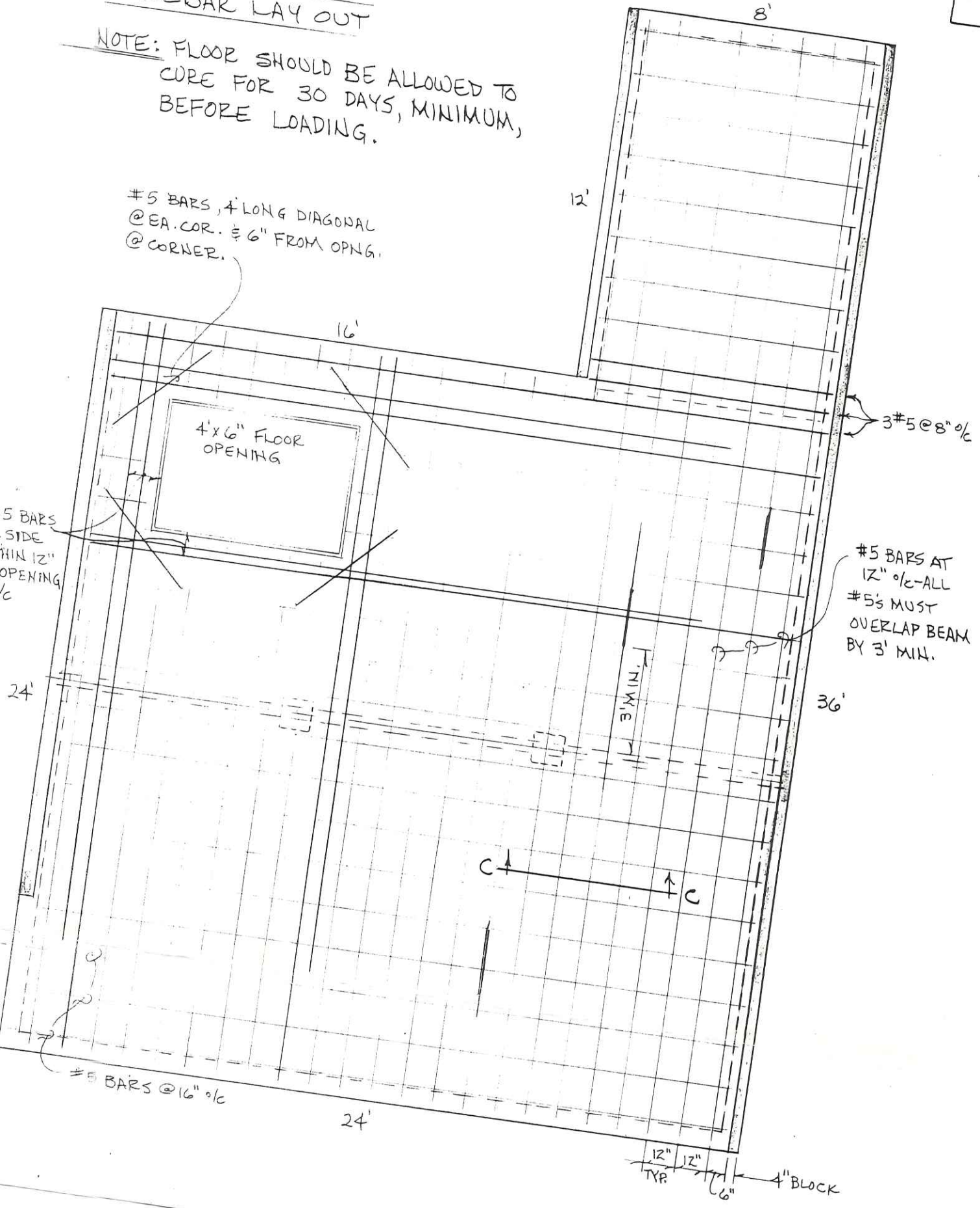
DON BERGSTEDT HOUSE		
210 W. MAUMEE AVE.		NAPOLEON, OHIO
SCALE: NOTED	APPROVED BY:	DRAWN BY: E.D.S.
DATE: MAR. 1989		REVISED: 6-5-89
BASEMENT, WING WALL & GARAGE FLOOR		
NAPOLEON ENGINEERING & SURVEYING, INC.		DRAWING NUMBER
P.O. BOX 671, NAPOLEON, OHIO		1 OF 3

GARAGE FLOOR REBAR LAY OUT

3 of 3

NOTE: FLOOR SHOULD BE ALLOWED TO
CURE FOR 30 DAYS, MINIMUM,
BEFORE LOADING.

#5 BARS, 4' LONG DIAGONAL
@ EA. COR. ± 6" FROM OPNG.
@ CORNER.



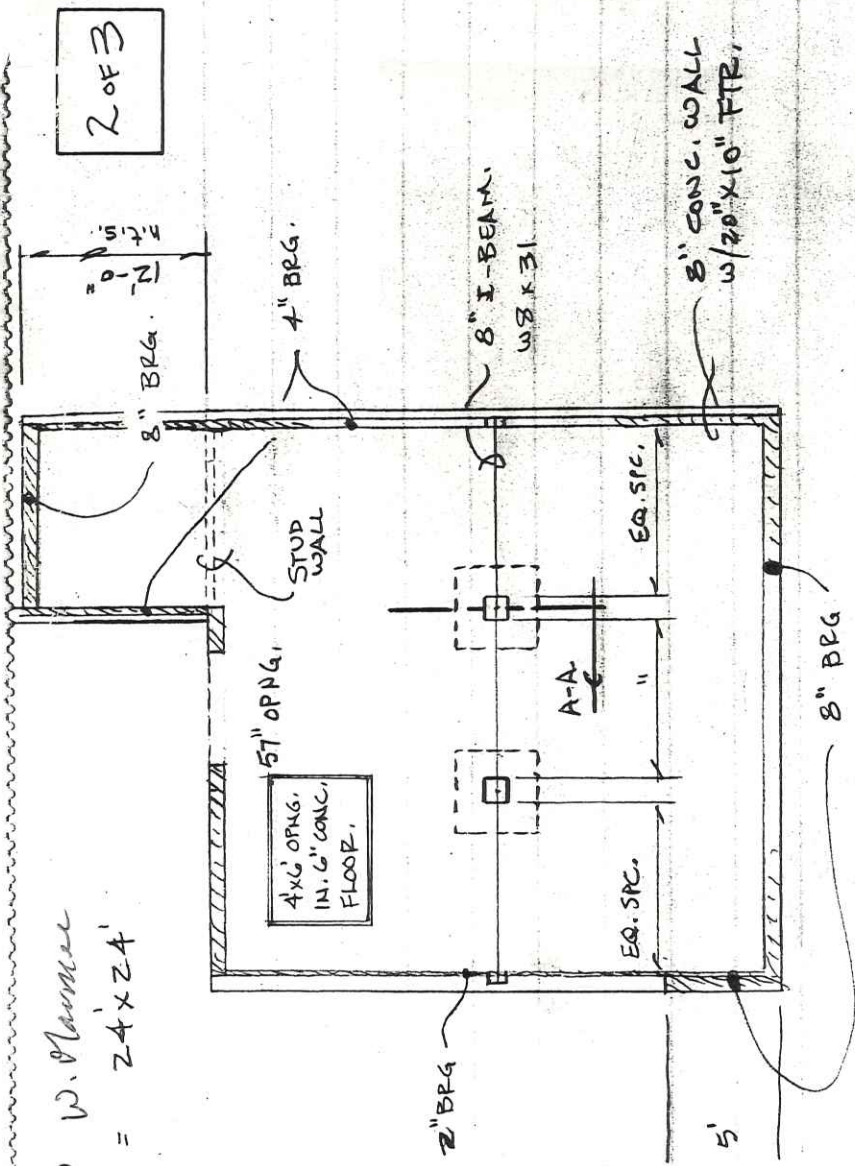
5 BARS
SIDE
OF 12"
OPENING
o/c

JID W. Munn
 GARAGE IS = 24' x 24'

2 OF 3

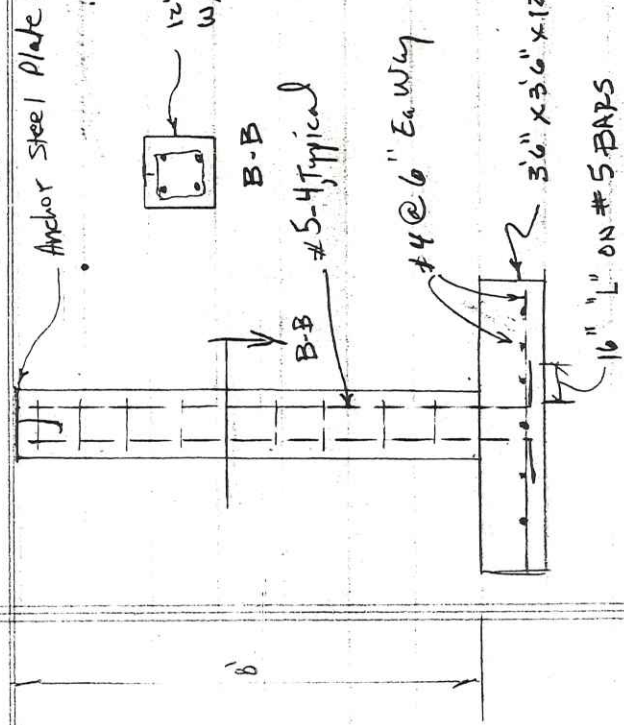
PLAN

1/8" = 1'-0"



8" BEAM W8 X 31

Anchor steel plate 1/4" to concrete weld beam to plate



12" x 12" CONC. COLUMN,
 w/ 4 # 5 L BARS VERT. &
 # 3 TIES @ 12" O/C

B-B
 # 5-4 Typical

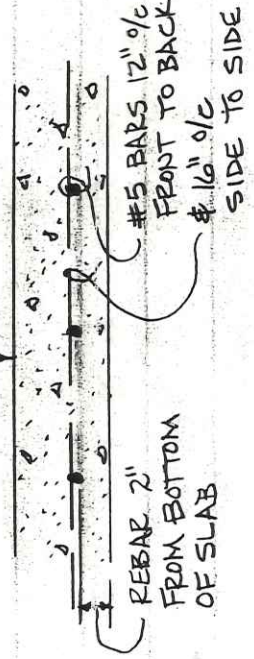
4 @ 6" Ea. W/ly

3/4" x 3/4" x 12" FTR.

16" L ON # 5 BARS

A-A
 COLUMN SECTION
 NO SCALE

GARAGE FLOOR TO BE
 LEVEL & A. MIN. OF
 6" THICK.



C-C
 FLOOR SECTION
 1" = 1'-0"